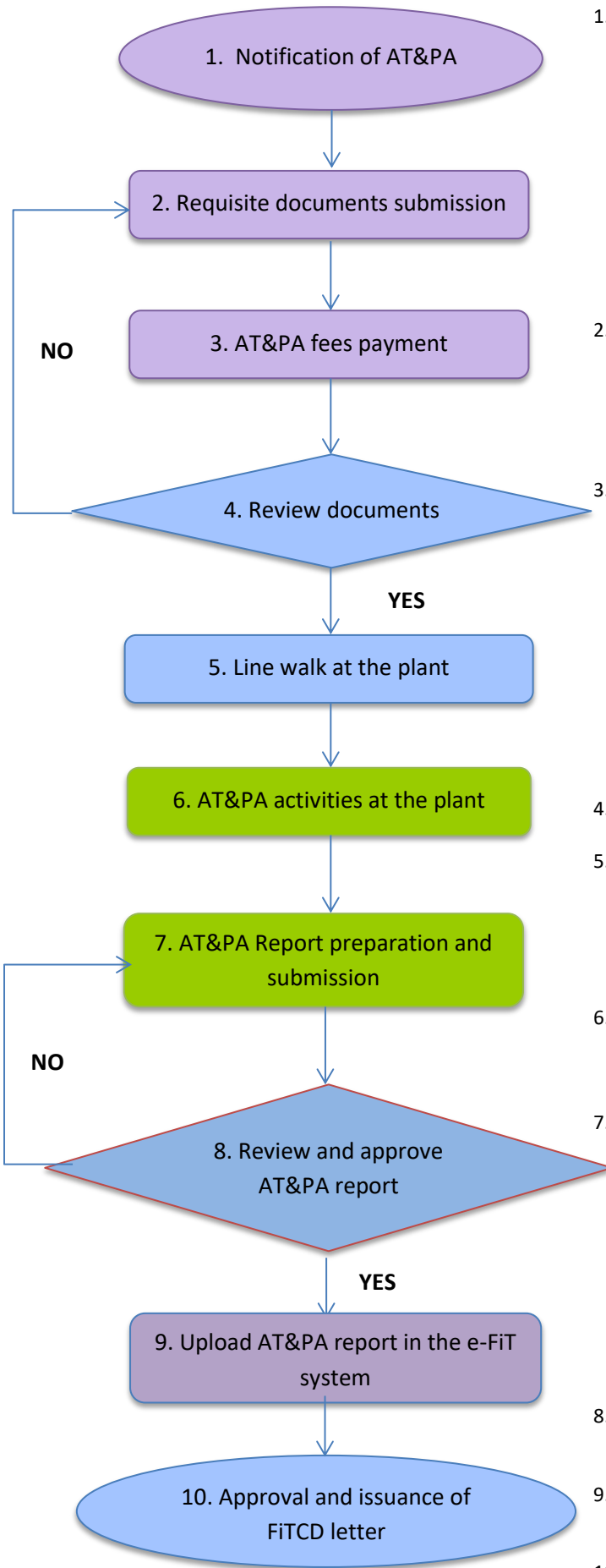


FLOW CHART OF ACCEPTANCE TEST & PERFORMANCE ASSESSMENT (AT&PA) OF BIOMASS POWER PLANTS UNDER THE FEED-IN TARIFF (FIT) PROJECTS IN MALAYSIA



1. FiAH/FiAH's Consultant submits an official notification to conduct the Acceptance Test & Performance Assessment (AT&PA) to SEDA Malaysia **NOT LESS than fourteen (14) days** on the AT&PA schedule.
 - ✓ The notice to be sent;
SEDA Malaysia (AT&PA of Biomass Project)
 Galeria PjH, Aras 9, Jalan P4W,
 Persiaran Perdana, Presint4,
 62100 Putrajaya, W.P. Putrajaya
 Tel: +603-8870 5800; Fax: +603-8870 5900
 Email: RET@seda.gov.my
2. FiAH/FiAH's Consultant to submit the requisite documents to SEDA Malaysia before executing AT&PA activities:
 - a) Checklist of AT&PA documentation (**Form 1**);
 - b) Information about the Project (**Form 2**);
 - c) Information about the Plant (**Form 3**);
3. AT&PA fees to be paid by FiAH (Bank draft or bankers cheque) in favour of **"Sustainable Energy Development Authority Malaysia"**.

Region	AT&PA Fee
Peninsular Malaysia	RM56,604.00
Sabah & Labuan	RM60,377.00

In the event the AT&PA works need to be postponed or repeated due to unreadiness or fault by FiAH, additional charges of RM1,000.00 per day will be imposed to FiAH for the number of days to complete the AT&PA works.

4. SEDA Malaysia reviews the requisite items and other related documents.
 5. SEDA Malaysia notifies and arranges the line walk date. The line walk will be conducted with the presence of SEDA Malaysia representative and FiAH/FiAH's Consultant.
- Confirmation of AT&PA date**
6. FiAH/FiAH's consultant executes AT&PA activities with the presence of SEDA Malaysia representative and relevant Competent Person engaged by FiAH.
 7. SEDA Malaysia representatives verify and finalize AT&PA Report. All AT&PA forms are required to sign by SEDA representative and FiAH/FiAH's consultant. The report shall consist of;
 - a) Checklist of AT&PA documentation (**Form 1**);
 - b) Information about the Project (**Form 2**);
 - c) Information about the Plant (**Form 3**);
 - d) Acceptance Test (**Form 4a**) & Reliability Run (**Form 4b**); and
 - e) Weighing Test (**Form 5a**), Mass Flow of Biomass Fuel (**Form 5b**), Fuel Sampling (**Form 5c**), Overall Plant Efficiency Test (OPET) (**Form 5d**)

8. SEDA Malaysia reviews and approves the AT&PA Report in the Feed-in Tariff (FOC) Meeting
9. FiAH/FiAH's consultant to upload the AT&PA report in the FiAH's e-FiT system (project milestone).
10. SEDA Malaysia finalizes the Feed-in Tariff Commencement Date (FiTCD) in the FiAH's e-FiT system. FiAH will receive an email notification and the letter of FiTCD will be issued upon request.

Legend:	
	FiAH/FiAH's Consultant
	SEDA Malaysia
	SEDA Malaysia representative