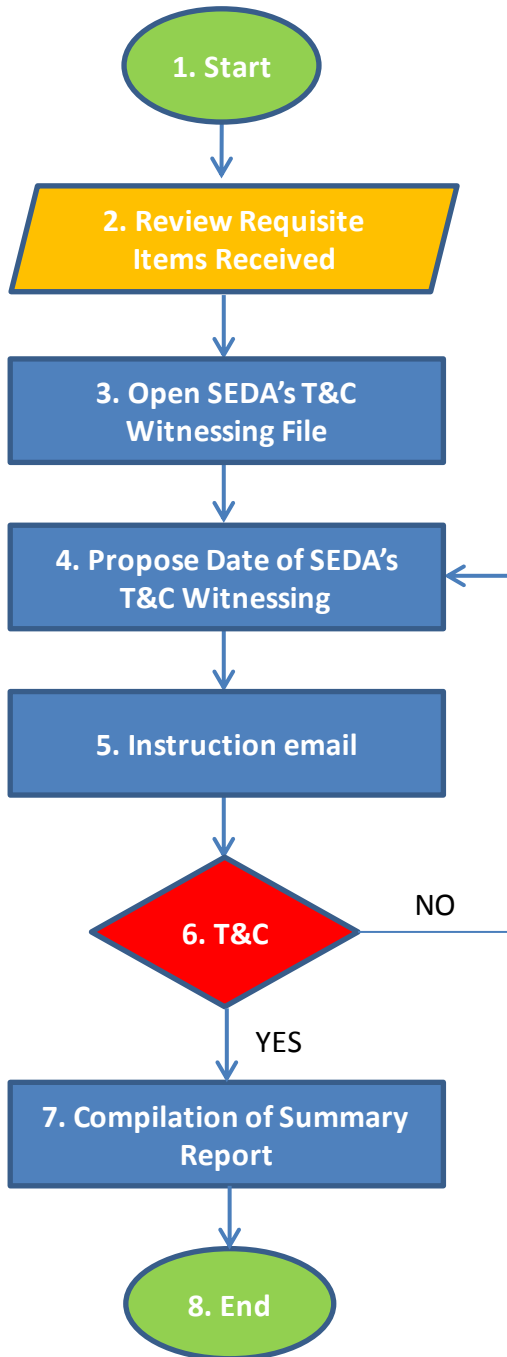


# Process Flow of Testing & Commissioning of GCPV Systems in Malaysia (Applicable for 2014 Quota Onwards)

**T&C Process Flow Chart**



**Description**

1. Official notification and request received from FiAH/SP/QP.
2. All requisite items received;
  - Pre-Commissioning Report (soft copy)
  - Latest SLD (soft copy)
  - Data Sheet for Modules & Inverters (soft copy)
  - Payment Fee in Banker's Cheque or Bank Draft (Physically send to SEDA)
3. After the requisite items have been reviewed, the **SEDA's T&C Witnessing File** will be opened under the FiAH's name .
4. The FiAH/SP/QP are required to propose the SEDA's T&C Witnessing Date **NOT LESS than 14 days** starting from the project file is available.
5. An instruction email will be sent to SEDA's T&C Team **NOT LESS than 12 days** from the confirmed T&C Witnessing Date with FiAH details, requisite documents and T&C Date. SEDA representative will directly contact the FiAH/SP/QP on the T&C program (venue & time).
6. **T&C Procedure at site;**
  - Pre-Commissioning report verification;
  - Data collection at site for Acceptance Test (AT) and Reliability Run (RR) Test calculation. The RR data should be available for the calculation of RR Test;
  - **The acceptable T&C report should be endorsed by the QP and signed off by SEDA representative;**
  - If the result is failed, the FiAH will have to rectify the problem within **14 days** before arranging for another T&C date.
7. SEDA representative shall prepare the **Summary Report** for the SEDA's T&C Witnessing based on their observation for compilation.
8. FiAH/SP/QP shall **upload the endorsed T&C report to the FiAH's eFit system** for the workplan accomplished .

**Note:** *It is advisable that SEDA's T&C Witnessing to be carried out **AFTER TNB/SES/DL Generation Meter has been installed/IOD/T&C on AC AND the 1 day (<72 kWp) / 7 days (≥72 kWp) RR data is available.***

*This is to allow FiAH/SP/QP readiness in conducting the T&C activities with SEDA representatives.*