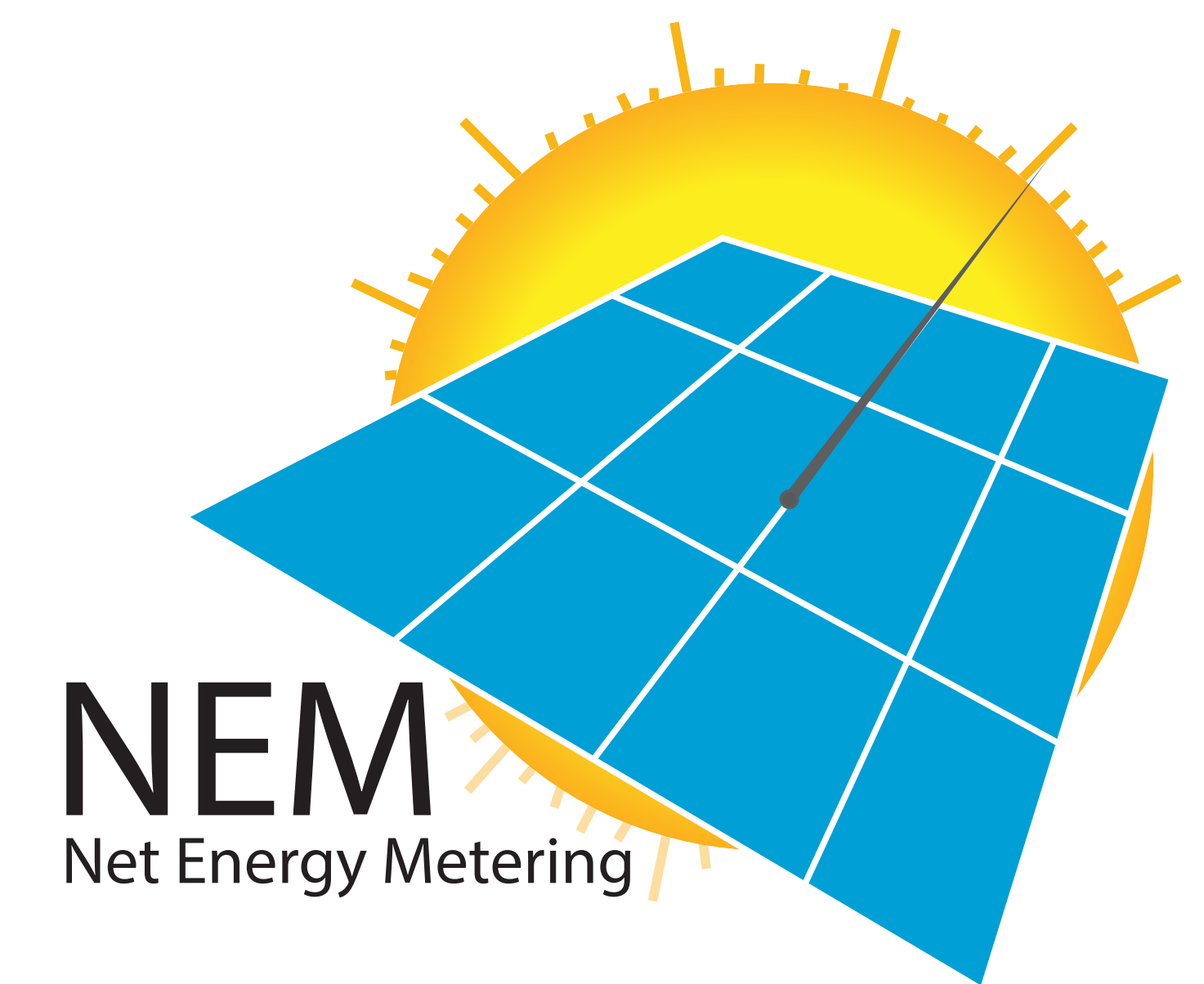
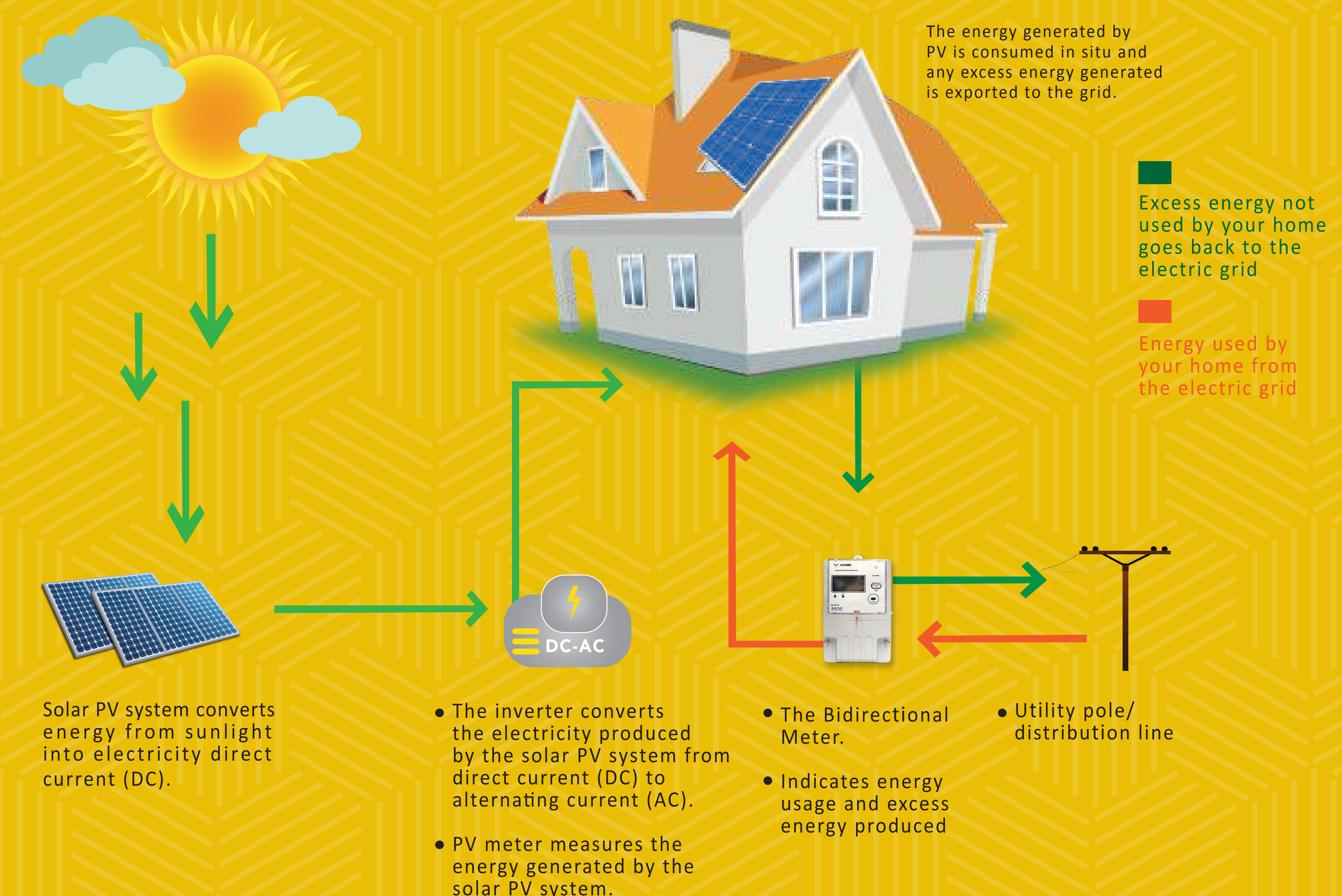


# Net Energy Metering (NEM)



## CONCEPT OF NEM

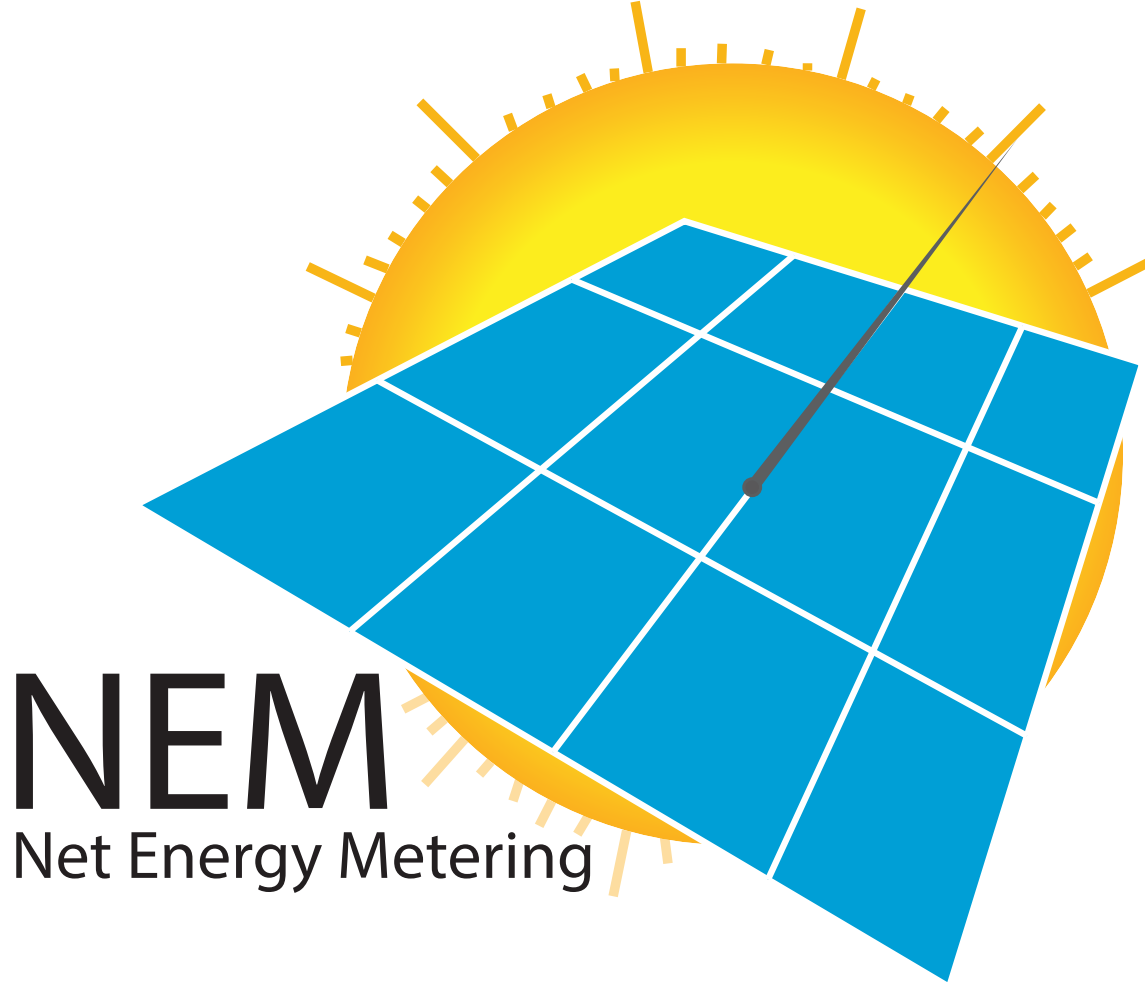
The concept of NEM is that the energy produced from the installed solar PV system will be consumed first, and any excess will be exported to TNB on a "one-on-one" offset basis. This scheme is applicable to all domestic, commercial, industrial and agricultural sectors as long as they are the customers of TNB. The PV systems can be installed at available rooftops or car porch within their own premises.





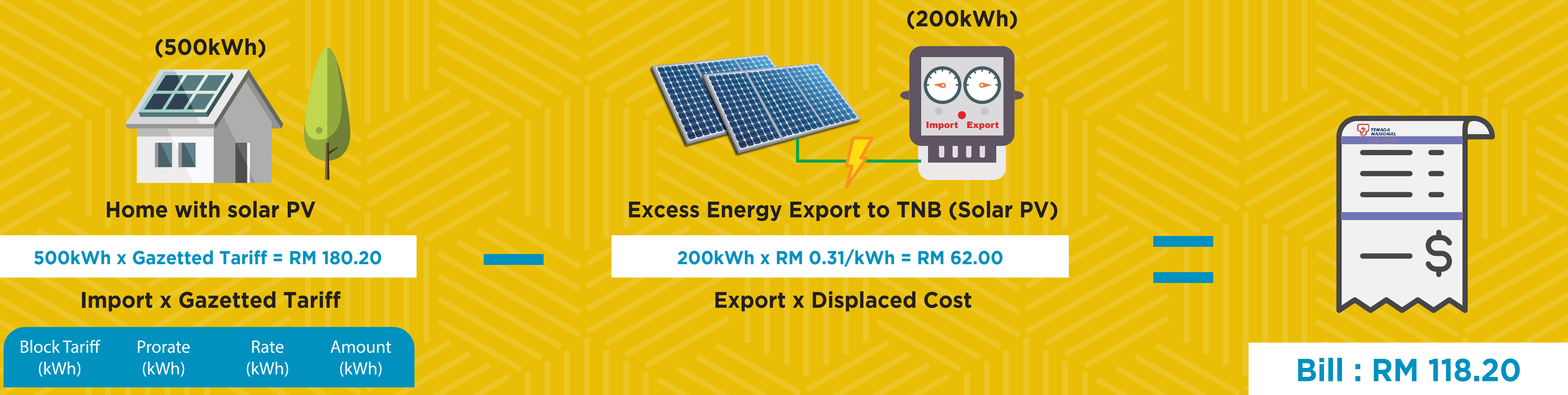
# Net Energy Metering (NEM)

## NEW NEM CALCULATION



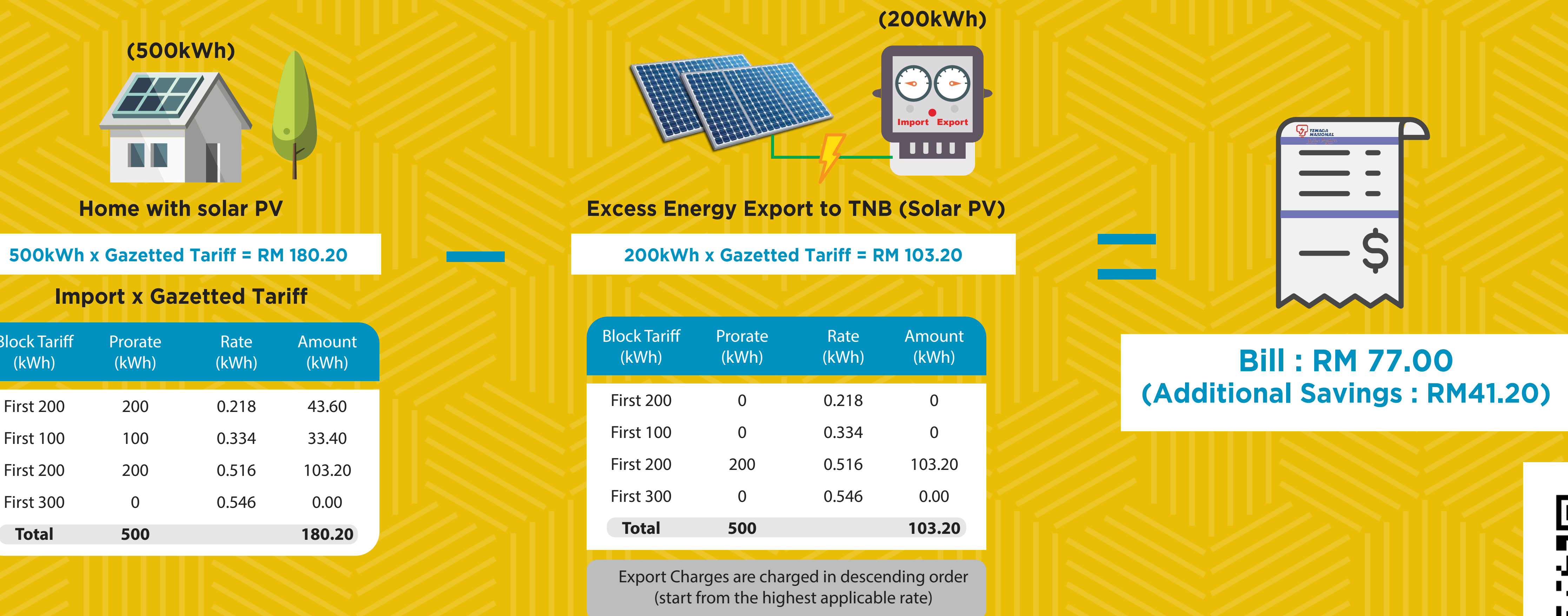
### PREVIOUS NEM

Solar energy that is produced from the installed PV system will be consumed first. Any excess will be exported and sold to TNB at the prevailing Displaced Cost prescribed by the Energy Commission.



### NEW NEM

The new NEM mechanism has been improved by adopting the true net energy metering concept, allowing excess solar PV generated energy to be exported back to the grid on a one-on-one offset basis.

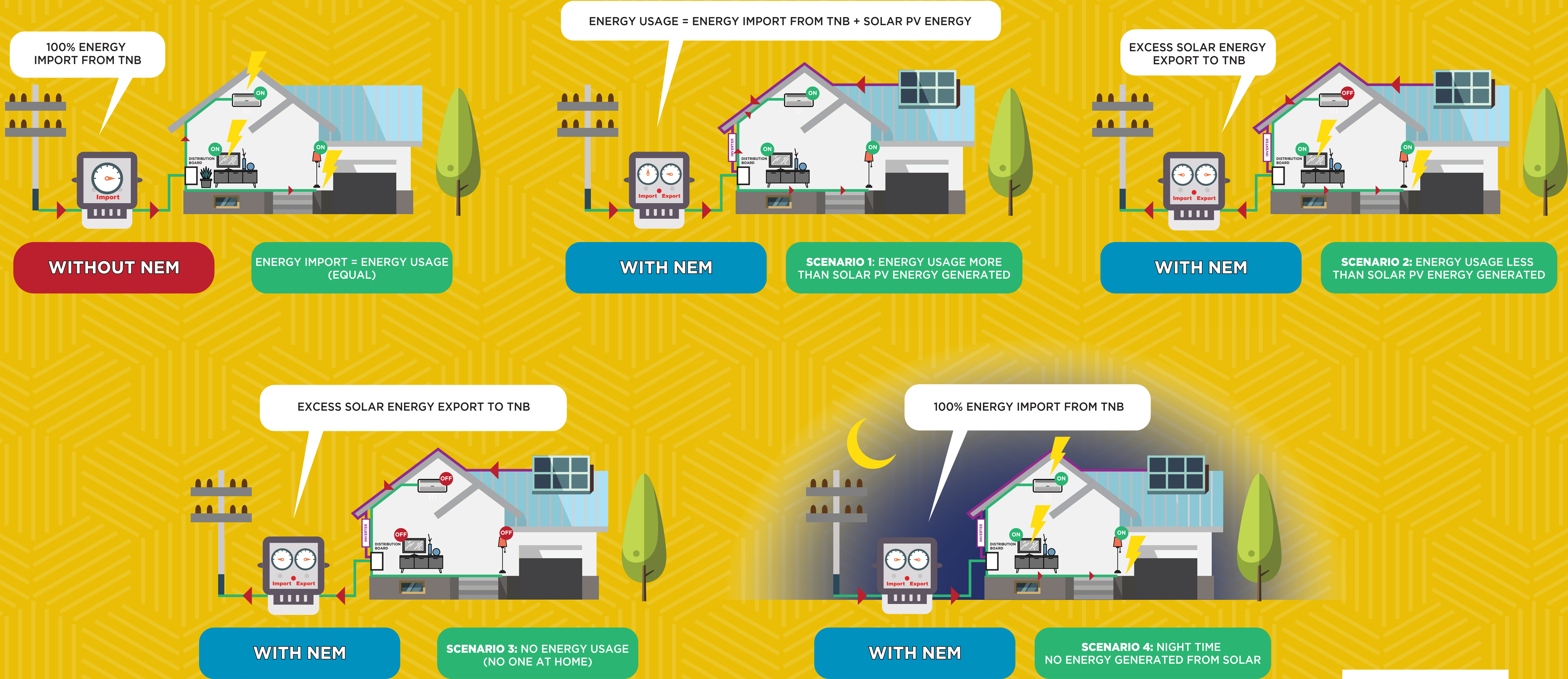
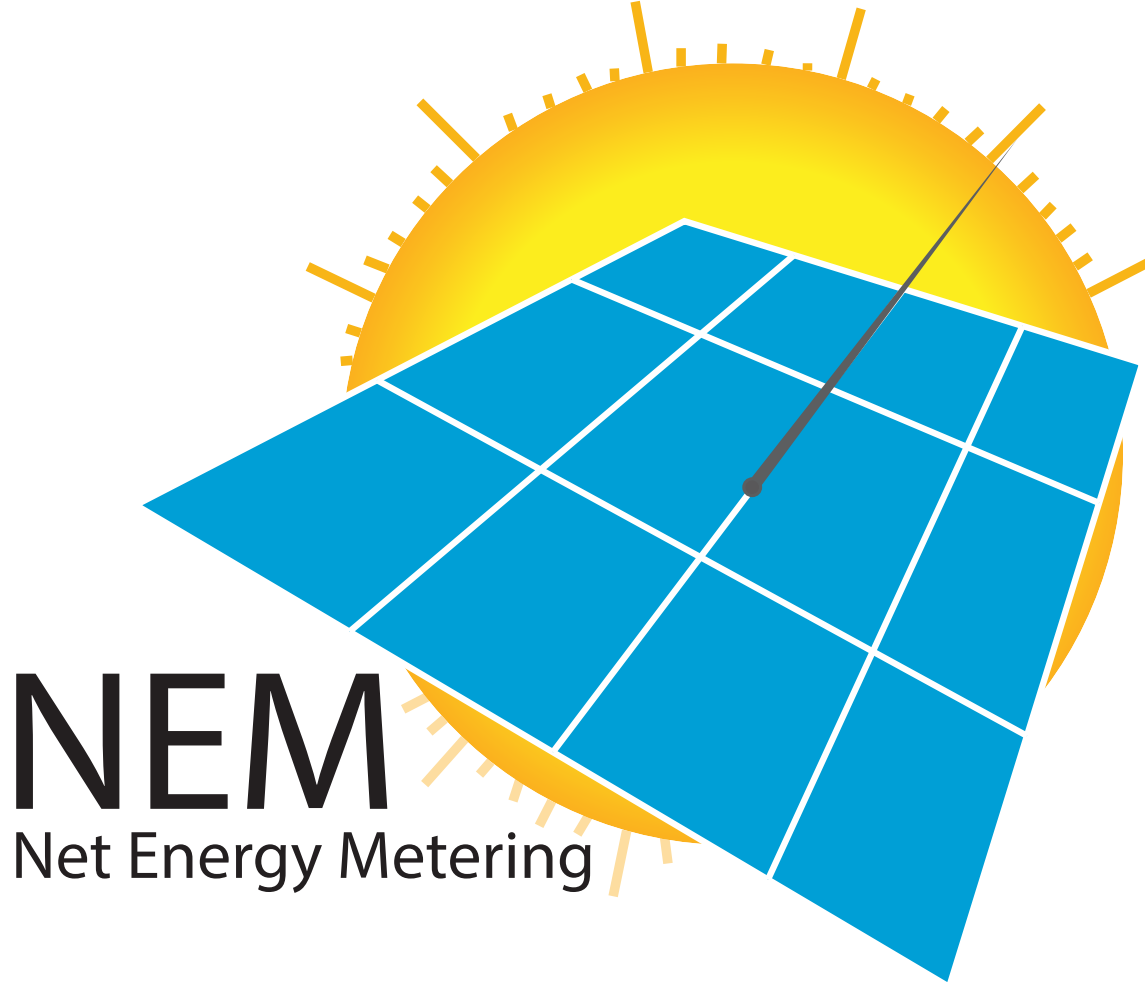


Scan here for more information



# Net Energy Metering (NEM)

## NEM CONCEPT SCENARIOS



Scan here for more information